

HEX Series™ TechData Profile

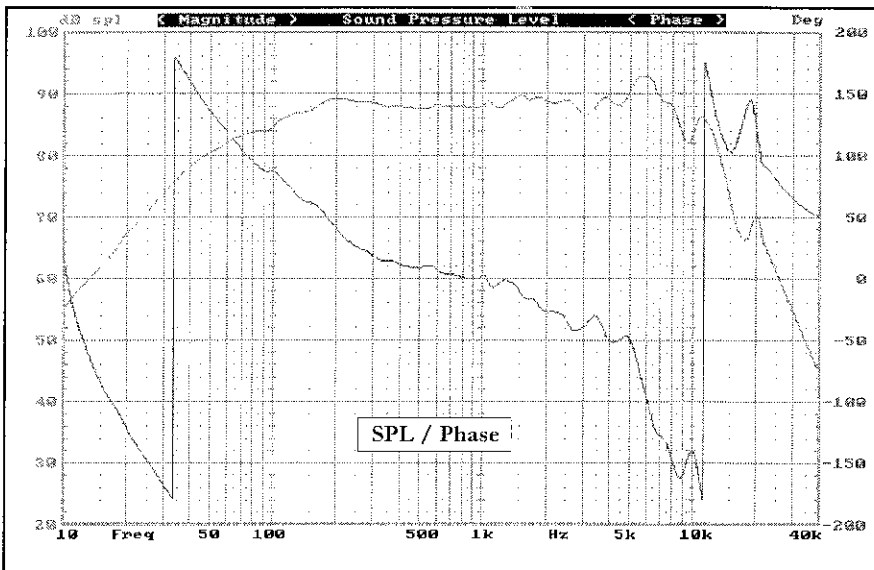
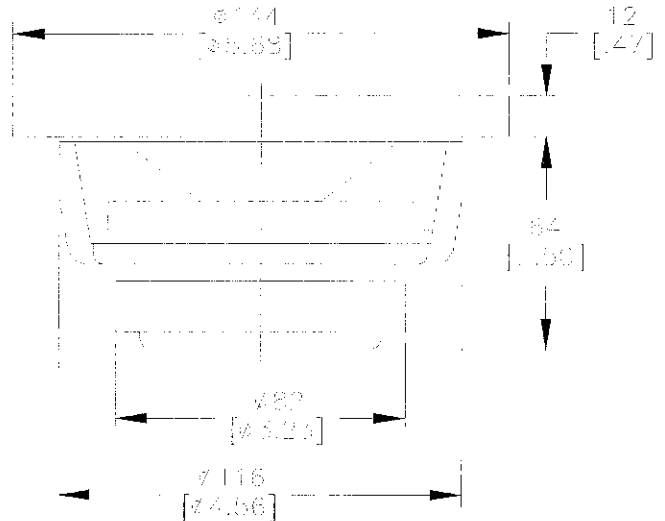
DA 5.6 HEX 130mm (5.3") MidBass

Common features:

- Patented 4-layer HEX.NET™ composite cone
- Edgewound CCA voice coil/Kapton™ former
- Injection molded ABS/Graphite basket
- Silicon butyl rubber surround
- Rubber magnet guard
- Integral grille mounting
- Gold-plated terminals

DA 5.6 Specifics:

- 80Hz-6.5kHz ±2dB
- DIN Power input: 60Wrms
- Voice coil diameter: 25mm (1.0")
- Great for Doors, Kicks and Decks
- Excellent wideband performance



Usage Recommendation:
Midrange/Midbass
Enclosure:
1.5 Liter Sealed
Fill:
8oz. R-22 Fiberglass
Crossover:
90Hz, 12dB/Oct. Highpass
4kHz, 12dB/Oct. Lowpass
*See unfiltered SPL/Z plots.
Amplifier:
50-120Wrms/Ch.

Thiele/Small Parameters

Znom= 4.000	SPLi= 87.86 dB
Revc= 3.180	No= 0.33 %
Sd= 0.0079 M ²	Ni= 0.31%
Fo= 54.222 Hz	Eg= 2.00 Vrms
Fi= 53.048 Hz	Mms= 8.9463 Gram
Qms= 7.807	Mmd= 8.5461 Gram
Qes= 0.391	Cms=963.0586 uM/N
Qts= 0.372	Cmo= 1.0000
Vas= 8.4354 Liter	Cmx= 2.5000 mm
BL= 4.9787 TM	Erm= 0.731
Le= 0.413 mH	Exm= 0.700
Hvc= 11.0000 mm	Krm= 2.234
Hag= 6.0000 mm	Kxm= 5.692 mH
Xmx= 2.5000 mm	Tvc= 5.0000 C/W
SPLo= 87.25 dB	Pmx= 60.000 Wrms

